
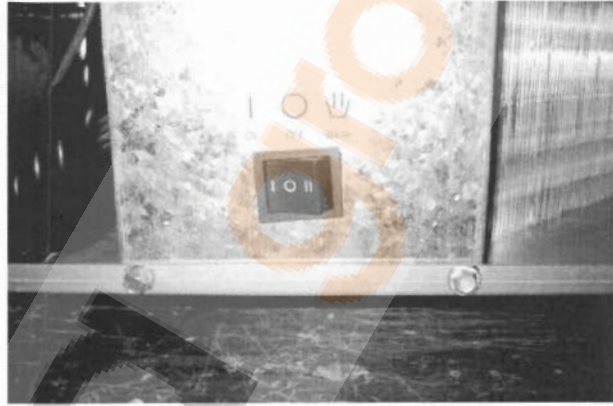
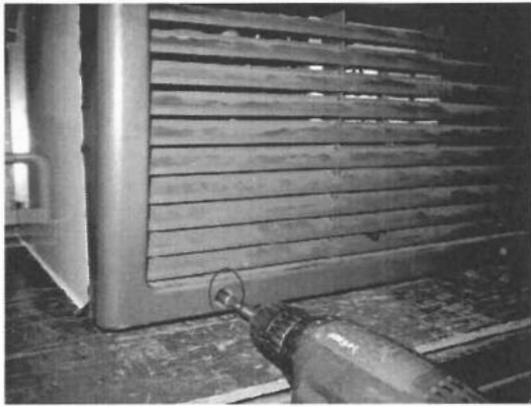


Mechanical Timer Replacement Instruction

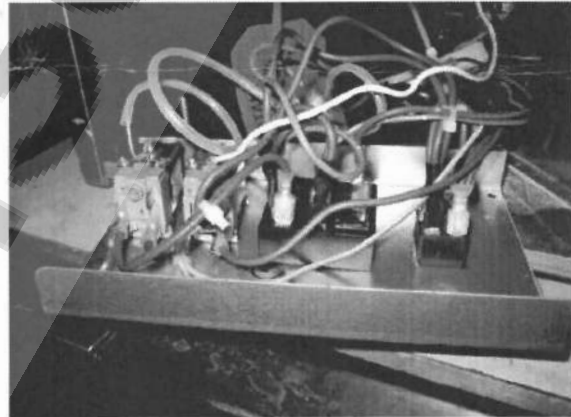
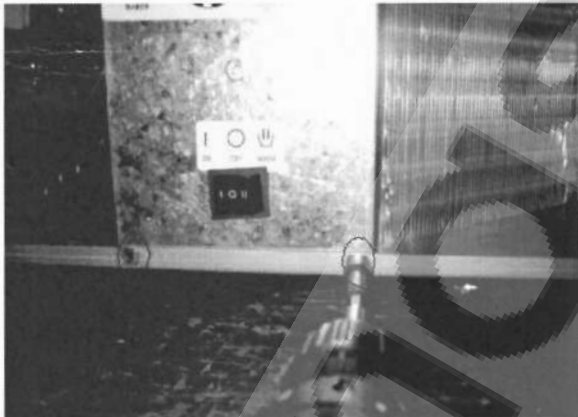
Version: Feb 12, 2011

 **Caution:** Please shut off power supply before replacing the timer

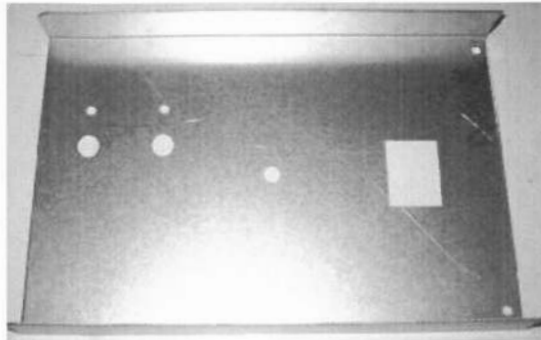
Step 1: Remove the two screws on front and take off the louvered front panel



Step 2: Remove the two screws on bracket

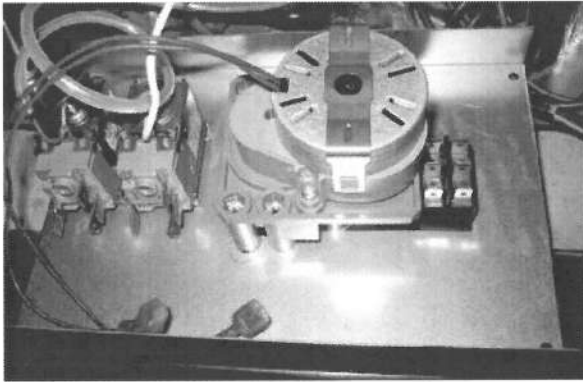


Step 3: Disconnect all the terminals from the thermostats, timer and main switch, then remove the thermostats, timer and switch from the bracket. (Send the old ABB timers back to Gavin please)



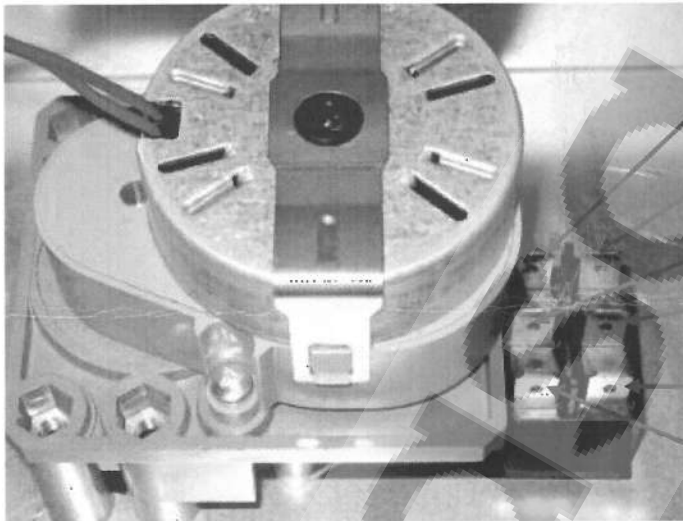
Step 4: Install the thermostats and main switch on the new bracket (mechanical timer has already

installed on the bracket by factory), please check the mechanical timer setting on 2.5min position



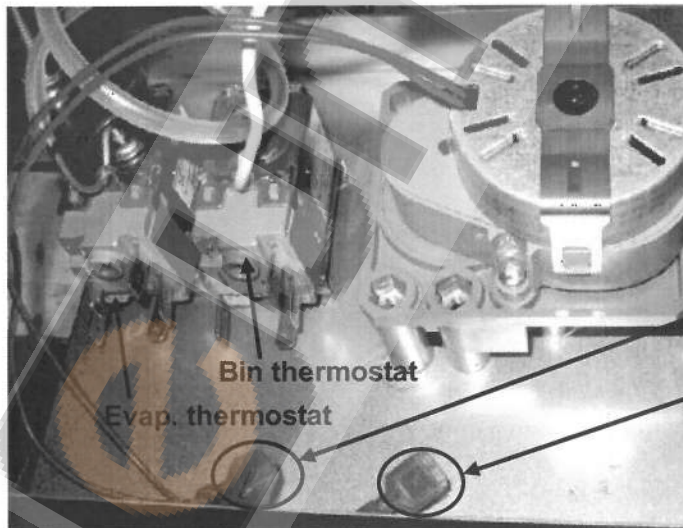
Step 5: Wiring connect

a) Main switch wiring connect (no change)

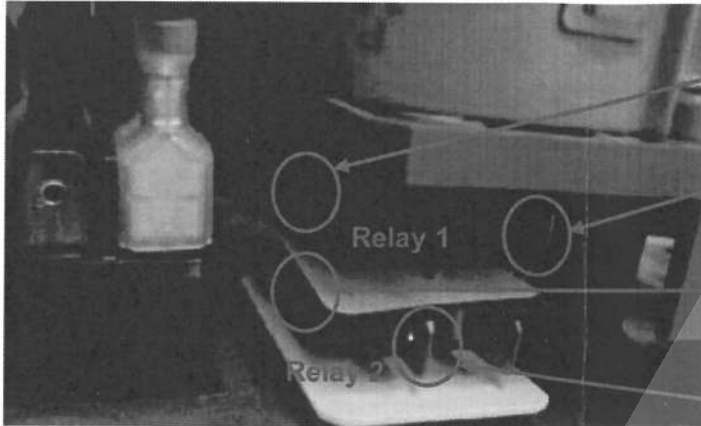


- #23 wiring connect #3 terminal
- #3/49 wiring connect #6 terminal
- #64/65 wiring connect #2 terminal
- #65 wiring connect #5 terminal
- #13 wiring connect #4 terminal
- #49 wiring connect #1 terminal

b) Mechanical timer wiring connect



- Timer motor connection:**
- Male terminal connect #9 wiring (blue)
 - Female terminal connect "C" terminal of evaporator thermostat



Timer relay connection:

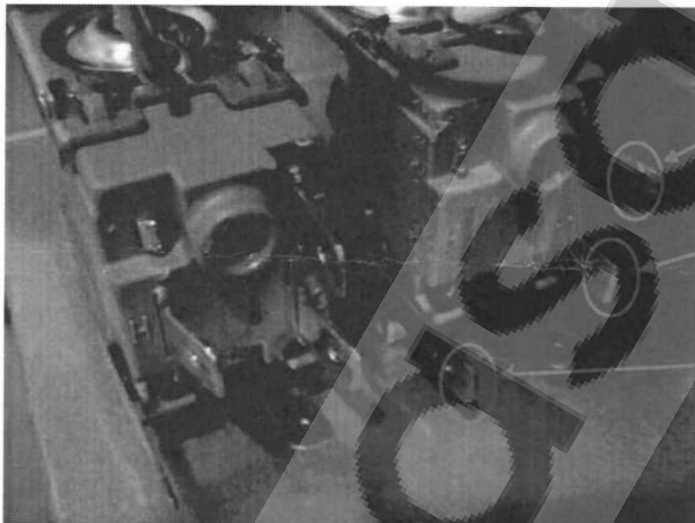
Connect #3/33 wiring

#92 wiring connect "NC 1"
(New wiring: 040001386)

Connect #33/66 wiring

#94 wiring connect "NO 2"
(New wiring: 040001386)

c) Thermostat wiring connect (no change)



Bin thermostat connection:

#64 wiring connect "L" terminal

#15 wiring connect "C" terminal

Connect grounding wiring
(yellow/green)



Evaporator thermostat connection:

#91 wiring connect "L" terminal
(New wiring: 040001386)

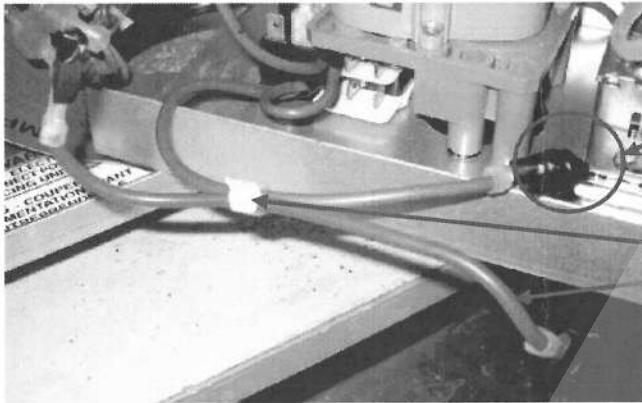
#93 wiring connect "H" terminal
(New wiring: 040001386)

Timer motor (Female terminal)
connect "C" terminal

Connect grounding wiring
(yellow/green)

d) Other wiring connect

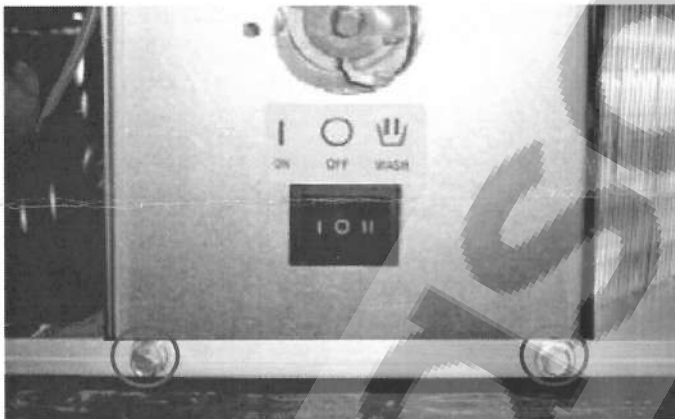
- #91/92 wiring connect #6/23 wiring
- #93/94 wiring connect #5/12 wiring
- Wrap the terminal of #66 wiring with electrical tape
- Cut off the tie strap and get rid of #67 wiring (red)



Wrap the terminal of #66 wiring with electrical tape

Cut off the tie strap and get rid of #67 wiring (red)

Step 6: Install the new bracket with two screws



Step 7: Install the louvered front panel with two screws



Step 7: Stick the new Wiring Diagram (P/N 040001442)

Appendix1:Wiring Diagram

